



TIME TO GET STARTED

ICAEW – KPMG, professional training and the Accredited Membership Programme in Greece





WHO ARE WE AND WHAT DO WE DO?



Established
in 1880



Globally recognised
as a world leader in
the accountancy,
finance and business
profession



166,398 members and
36,084 students,
working to build a
world of sustainable
economies



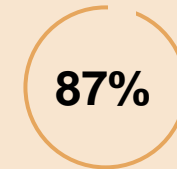
We foster diversity to
work across any
finance discipline as
an ACA trainee or
member



We provide
flexibility to access
and study for the
ACA



Students and members are
supported by **Chartered
Accountants Worldwide** –
a community of 1.8m
Chartered Accountants and
students in 190 countries.



87%* of all ACA
students
**qualify in four
years or less**



**100% of the
world's 100
global leading
brands employ
ICAEW
Chartered
Accountants**

LOCATIONS OF ICAEW OFFICES AND TRAINING



- ACA training
- Offices
- RMAs
- Recognition agreements

WHAT DOES AN ICAEW CHARTERED ACCOUNTANT DO?



1

They change the world helping all types of organisations from charities public sector make a bigger impact



2

They push boundaries looking beyond the numbers to create new answers and find better ways



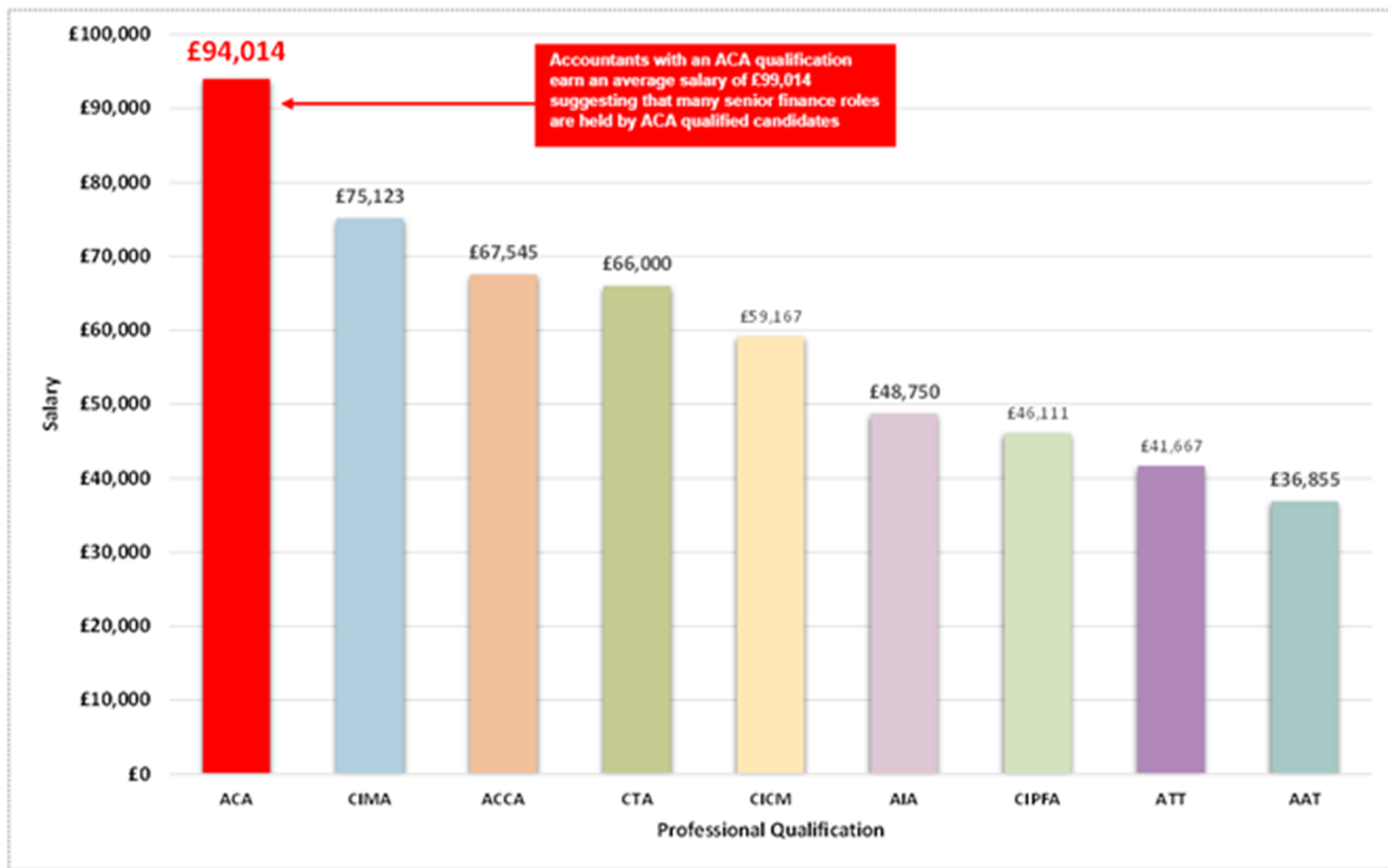
3

They share their vision creating solutions and supporting progress in every sector you can think of. And a lot, lot more

THE INFINITE CAREER OPTIONS



SALARIES



Source: GAAPweb Salary Survey Report 2022

The Accredited Membership Programme (AMP) for the ACA and OEL qualifications

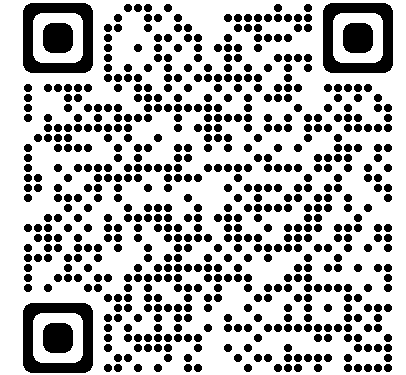


PRACTICAL WORK
EXPERIENCE



ETHICS AND
PROFESSIONAL
SCEPTICISM

THERE ARE
FOUR ELEMENTS TO ACA
TRAINING



ACCOUNTANCY,
FINANCE AND
BUSINESS
MODULES



PROFESSIONAL
DEVELOPMENT

PRACTICAL WORK EXPERIENCE

450
DAYS

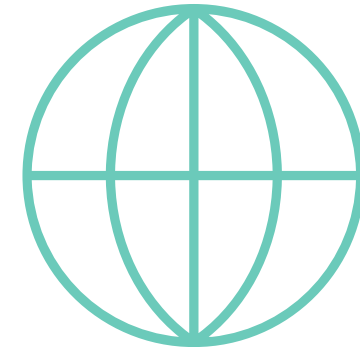
Practical work experience as part of a training agreement with an authorised employer

3 - 5
YEARS

Undertake real-life work of a financial, business and/or commercial nature, typically taking 3 – 5 years

12
MONTHS

If you have completed an internship or placement with one of our employers this may count towards your 450 days



ETHICS AND PROFESSIONAL SCEPTICISM



We must ensure your judgment is not compromised through bias, conflict of interest or undue influence

ACA

Ethics is integrated throughout the ACA and will help you develop your ethical capabilities

6

You will have an ethics review every 6 months with your mentor and there are 6 ethics modules to complete

“If you feel doubtful then speak up – you’re almost certainly right!”

Caroline Fox, ICAEW Ethics Moderator

PROFESSIONAL DEVELOPMENT



1 Adding value

2 Communication

3 Decision-making

4 Ethics and professionalism

5 Problem solving

6 Teamwork

7 Technical
competence

15 ACCOUNTANCY, FINANCE AND BUSINESS EXAMS

LAW*
PRINCIPLES OF TAXATION*
MANAGEMENT INFORMATION
BUSINESS, TECHNOLOGY & FINANCE
ASSURANCE
ACCOUNTING

**CERTIFICATE
LEVEL**

TAX COMPLIANCE*
FINANCIAL ACCOUNTING & REPORTING
FINANCIAL MANAGEMENT
BUSINESS, STRATEGY & TECHNOLOGY
BUSINESS PLANNING*
AUDIT & ASSURANCE

**PROFESSIONAL
LEVEL**

**Data
Analytics**

Sustainability

**Critical
Thinking**

STRATEGIC BUSINESS MANAGEMENT
CORPORATE REPORTING
CASE STUDY

**ADVANCED
LEVEL**

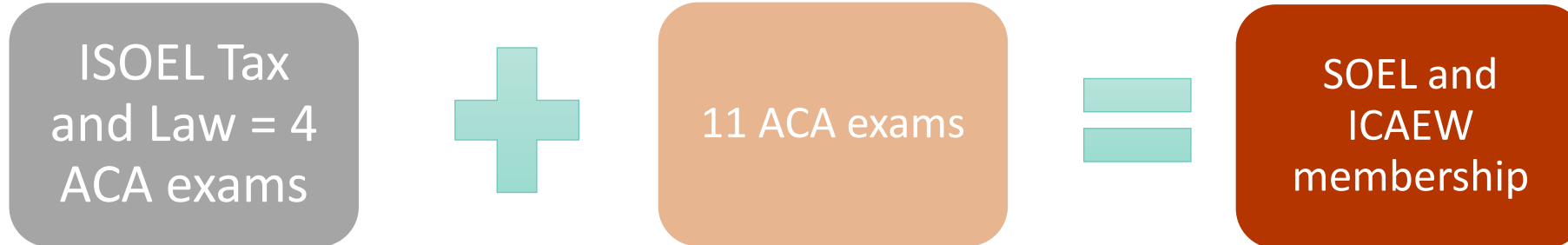


What is the Accredited Membership Programme (AMP)?

- ENABLES YOU TO STUDY AND BECOME A MEMBER OF BOTH ICAEW AND SOEL
- MUTUAL AGREEMENT OF FREE CREDITS FOR RELEVANT EXAMS FROM IESOEL AND ACA PAPERS
- BUILDING PROFESSIONAL SKILLS TO SUPPORT ECONOMIC SUCCESS

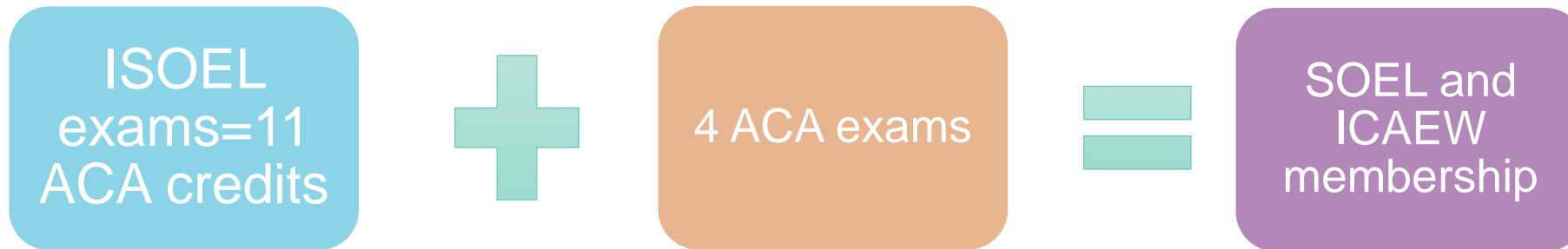
AMP Route 1

All credits are awarded free of charge by SOEL and ICAEW



AMP Route 2

All credits are awarded free of charge by SOEL and ICAEW

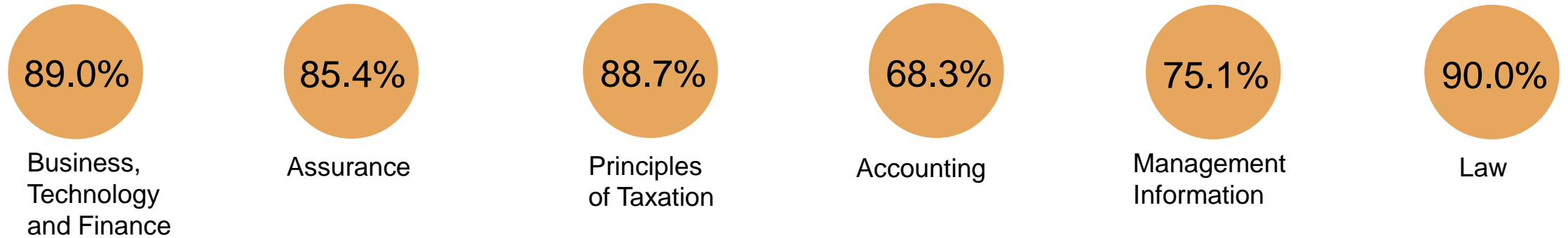


Credit for prior learning

- You may be eligible to apply for credit for prior learning/exemptions if you hold a relevant degree or professional qualification.
- Graduates from Greek universities are eligible to apply for up to 12 CPL
- Graduates with BSc in Accounting and Finance from University of Peloponnese are eligible to apply for up to 5 CPL
- Find out more at [icaew.com/cpl](https://www.icaew.com/cpl)

HIGH PASS RATES

Certificate Level first time pass rates (January-December 2022)



Professional Level exam pass rates (2022 exams)

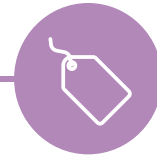
between 59.1% and 91.0%

Case Study pass rates (July and November 2022)

81.7% first-time pass rate, thanks to the quality of the learning material and support available

YOUR STUDENT BENEFITS

[ICAEW.COM/STUDENTBENEFITS](https://www.icaew.com/studentbenefits)



COMMUNITIES



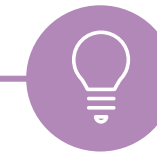
STUDENT
REWARDS



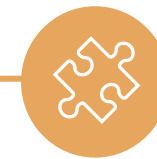
XERO



STUDENT SOCIETIES



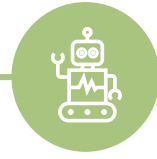
STUDENT INSIGHTS



FACULTIES



CABA



FINANCE IN A
DIGITAL WORLD



LIBRARY AND
INFORMATION
SERVICES



PLANNER



EXAM RESOURCES



MyICAEW APP

free advice and support from caba

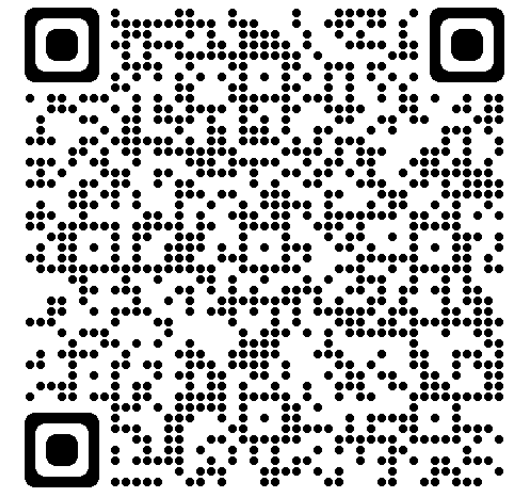
As an ACA student, you, your spouse or partner, and dependent children up to the age of 25 are eligible for free support from caba.

- Emotional support including counselling
- Career development support
- UK debt advice
- UK legal advice
- Business start-up support
- Means-tested financial support
- Health and carer support
- Personal and professional development courses



- **call**
● **+44(0)1788 565 366**
- **email**
● **enquiries@caba.org.uk**
- **live chat**
● **caba.custhelp.com**
- **visit**
● **caba.org.uk**

Fundamentals of Sustainability Programme



COMMUNITIES ICAEW

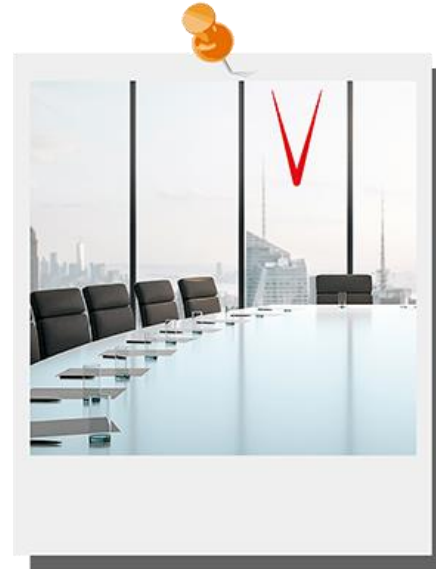
icaew.com/groups-and-networks/communities



Sustainability and Climate Change



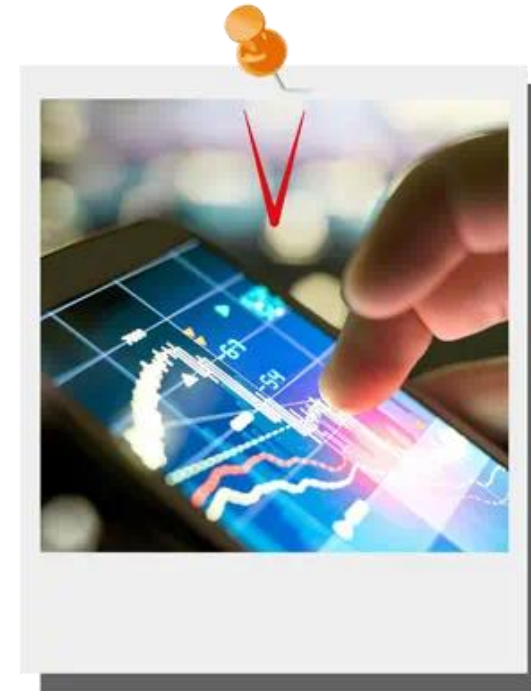
Corporate Governance



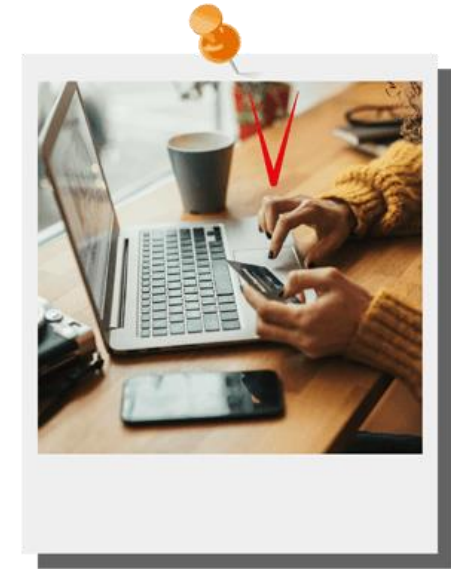
Women In Finance



Data Analytics Community



Retail

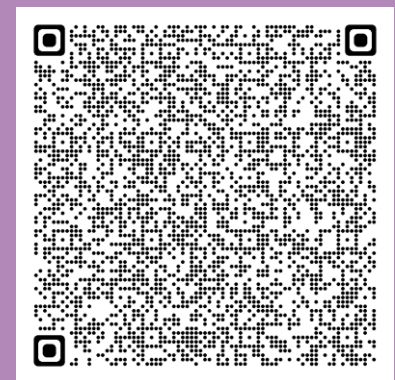




ICAEW CYPRUS & GREECE VIRTUAL CONFERENCE 2024

CATCH UP NOW WITH THE RECORDING

**MEETING THE CHALLENGES OF
THE CURRENT GENERATION:
AI AND SUSTAINABILITY**





KEEP IN TOUCH



varvara.kouvari@icaew.com

+30 6970 991080



ICAEW Careers



ICAEW Careers



@icaew



@ICAEW_Careers



icaew.com/careers



Become an ICAEW
Chartered Accountant



train.icaew.com

Any questions?

Christiana Diola FCA BFP
Director, Europe
christiana.diola@icaew.com

Varvara Kouvari
Student Engagement and Stakeholder
Executive, Europe
varvara.kouvari@icaew.com



icaew.com